

TEMPERATURE GRADIENT UNIFORMITY TEST FOR MODEL FN333

This is the data from an actual test made on 9/10/2004 using a nine point survey.

The furnace was a model FN333 with a 3 foot cubed working dimension, 48" wide by 52"high by 48" deep actual inside dimensions, water cooled fan, nine zone Honeywell HC900

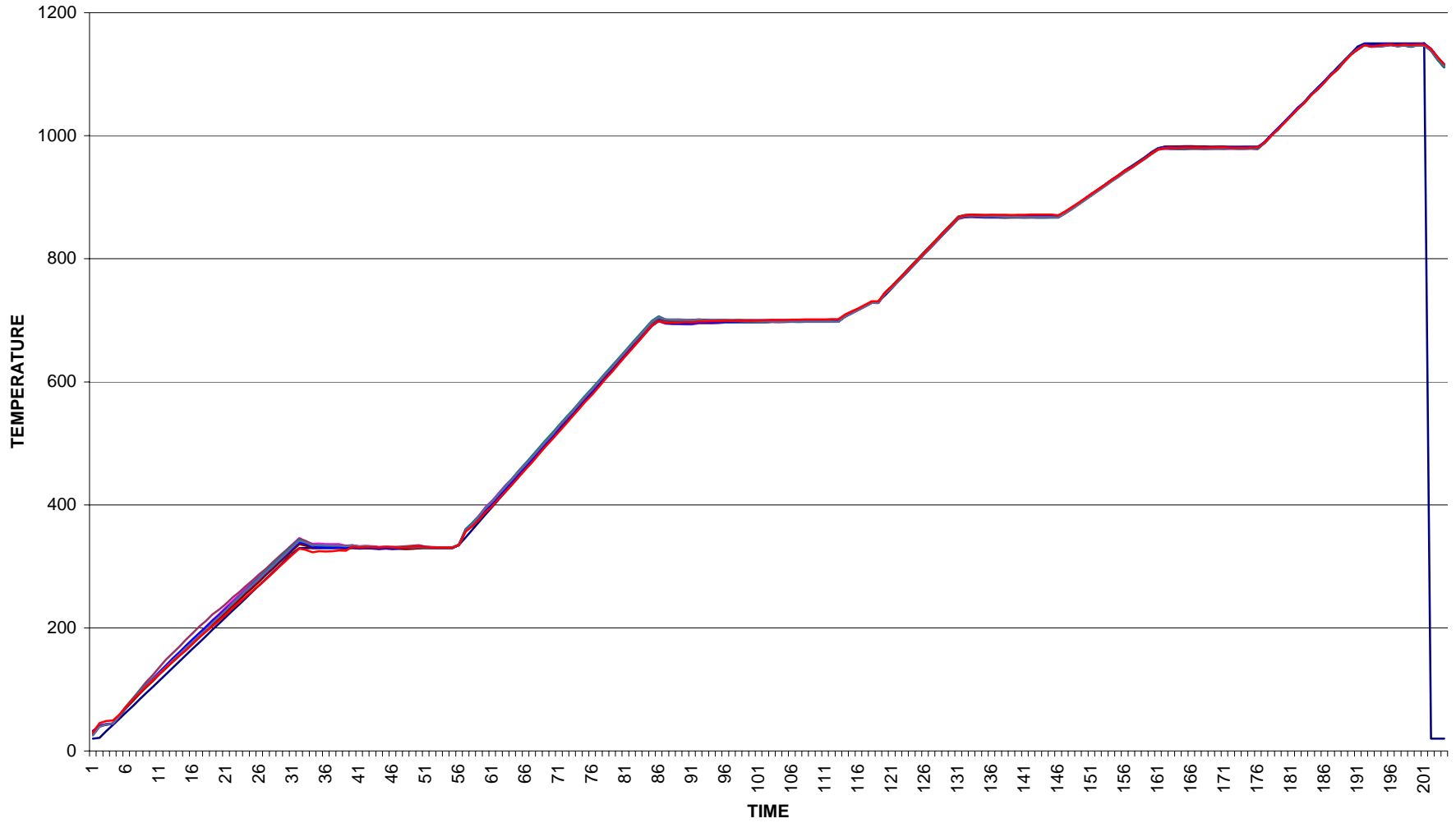
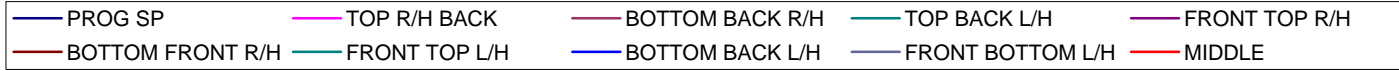
PROGRAM SETPOINT	TOP RIGHT BACK	BOTTOM BACK RIGHT	TOP BACK LEFT	FRONT TOP RIGHT	BOTTOM FRONT RIGHT	FRONT TOP LEFT	BOTTOM BACK LEFT	FRONT BOTTOM LEFT	MIDDLE	MAX TEMP	MIN TEMP	DIFFERENCE	AVERAGE
330C	333.96	334.41	332.24	331.17	330.03	331.76	331.11	334.2	331.78	334.41	330.03	4.38	332.51
330C	332.71	332.55	330.92	330.15	328.83	330.86	329.48	332.42	330.6	332.71	328.83	3.88	331.12
330C	332.91	333.05	331.24	330.65	329.39	331.47	330.09	332.92	331.52	333.05	329.39	3.66	331.63
330C	332.62	332.39	331.07	330.78	328.97	331.54	329.92	332.25	331.34	332.62	328.97	3.65	331.35
330C	331.37	331.14	330.18	329.83	328.14	330.95	328.96	331.25	331.01	331.37	328.14	3.23	330.42
330C	331.99	331.58	330.8	330.45	329.06	331.69	329.82	331.74	331.62	331.99	329.06	2.93	331.07
330C	331.45	331.04	330.39	330.28	328.28	331.52	329.1	331.22	331.65	331.45	328.28	3.37	330.66
330C	331.22	331.9	330.21	330.22	328.35	331.53	329.71	330.92	330.84	331.9	328.35	3.55	330.68
330C	331.12	332.77	330.35	330.36	328.23	331.83	330.5	330.89	331.23	332.77	328.23	4.54	331.01
330C	331.07	333.64	330.23	330.48	328.48	331.71	331.11	330.84	331.79	333.64	328.48	5.16	331.30
330C	330.79	334.33	330.19	330.38	329.53	331.73	332.53	331.27	332.34	334.33	329.53	4.80	331.74
330C	330.68	332.11	329.95	330.13	331.16	331.42	331.54	330.87	331.42	332.11	329.95	2.16	331.14
330C	330.51	331.46	329.78	329.9	331.05	331.18	331.13	331.06	330.51	331.46	329.78	1.68	330.80
330C	330.34	330.98	329.73	329.86	331.07	331.26	330.83	330.95	330.58	331.26	329.73	1.53	330.69
330C	330.47	330.69	329.75	329.93	331.14	331.27	330.72	330.91	330.59	331.27	329.75	1.52	330.67
330C	330.36	330.34	329.75	329.94	330.78	331.21	330.54	330.68	330.67	331.21	329.75	1.46	330.55

PROGRAM SETPOINT	TOP RIGHT BACK	BOTTOM BACK RIGHT	TOP BACK LEFT	FRONT TOP RIGHT	BOTTOM FRONT RIGHT	FRONT TOP LEFT	BOTTOM BACK LEFT	FRONT BOTTOM LEFT	MIDDLE	MAX TEMP	MIN TEMP	DIFFERENCE	AVERAGE
700C	697.02	695.22	696.93	697.64	700.29	698.33	696.44	699.62	698.36	700.29	695.22	5.07	698.01
700C	697.05	695.48	696.82	697.71	700.23	698.46	696.8	699.45	698.43	700.23	695.48	4.75	698.07
700C	696.88	696.22	696.83	697.53	700.05	698.45	697.51	699.22	699.1	700.05	696.22	3.83	698.18
700C	696.83	696.29	696.65	697.47	699.74	698.32	698.94	699.74	699.18	699.74	696.29	3.45	698.08
700C	696.9	696.59	696.71	697.53	699.98	698.37	697.97	698.76	699.3	699.98	696.59	3.39	698.21
700C	696.91	696.79	696.72	697.59	699.8	698.43	698.28	698.65	699.49	699.8	696.72	3.08	698.25
700C	696.86	696.79	696.66	697.53	699.61	698.42	698.39	698.47	699.43	699.61	696.66	2.95	698.18
700C	696.93	697.04	696.66	697.53	699.67	698.41	698.49	698.24	699.68	699.68	696.66	3.02	698.23
700C	696.99	696.74	696.97	698.01	699.31	698.78	698.19	698.11	699.97	699.97	696.74	3.23	698.30
700C	697.79	697.23	697.52	697.9	699.98	698.6	698.74	698.18	700.4	700.4	697.23	3.17	698.67
700C	697.91	696.68	697.57	697.83	698.88	698.53	698	697.58	700.4	700.4	696.68	3.72	698.38
700C	698.04	697.29	697.64	697.83	699.11	698.4	698.47	697.88	700.64	700.64	697.29	3.35	698.59
700C	697.86	697.65	697.51	697.7	699.16	698.14	698.76	697.83	700.89	700.89	697.51	3.38	698.64
700C	697.86	697.9	697.39	697.52	699.34	698.07	699.05	698.06	700.94	700.94	697.39	3.55	698.71
700C	697.93	698.15	697.58	697.65	699.35	698.14	699.24	698.13	701.26	701.26	697.58	3.68	698.87
700C	697.93	698.21	697.58	697.59	699.47	698.08	699.3	698	701.42	701.42	697.58	3.84	698.90
700C	697.87	698.21	697.52	697.59	699.41	698.08	699.49	698	701.36	701.36	697.52	3.84	698.89
700C	697.99	698.26	697.57	697.64	699.58	698.13	699.53	698.01	701.37	701.37	697.57	3.80	698.95
700C	698.06	698.39	697.57	697.64	699.7	698.25	699.7	698.01	701.79	701.79	697.57	4.22	699.09

PROGRAM SETPOINT	TOP RIGHT BACK	BOTTOM BACK RIGHT	TOP BACK LEFT	FRONT TOP RIGHT	BOTTOM FRONT RIGHT	FRONT TOP LEFT	BOTTOM BACK LEFT	FRONT BOTTOM LEFT	MIDDLE	MAX TEMP	MIN TEMP	DIFFERENCE	AVERAGE
982C	978.8	979.19	979.04	979.97	982.06	980.99	981.27	980.1	980.02	982.06	978.8	3.26	980.35
982C	978.4	979.62	978.76	979.62	982.67	980.37	981.88	980.47	980.33	982.67	978.4	4.27	980.48
982C	978.14	979.16	978.36	979.22	982.53	979.96	981.4	980.39	980.18	982.53	978.14	4.39	980.19
982C	978.04	979.53	978.34	979.14	982.78	979.76	981.86	980.52	980.64	982.78	978.04	4.74	980.34
982C	978.54	979.43	978.7	979.49	982.86	980.16	981.6	980.55	981.05	982.86	978.54	4.32	980.52
982C	978.51	979.14	978.73	979.39	982.5	980.06	981.3	980.33	980.89	982.5	978.51	3.99	980.34
982C	978.42	979.3	978.57	979.22	982.47	979.83	981.59	980.12	980.94	982.47	978.42	4.05	980.29
982C	978.66	979.02	978.79	979.31	981.9	979.84	981	979.76	980.97	981.9	978.66	3.24	980.12
982C	978.94	979.56	978.88	979.34	982.25	979.93	981.68	979.98	981.32	982.25	978.88	3.37	980.41
982C	978.52	979.46	978.59	979.17	982.15	979.89	981.58	979.97	981.24	982.15	978.52	3.63	980.27
982C	978.8	980.36	978.93	979.39	979.9	980.04	981.2	979.97	980.3	981.2	978.8	2.40	980.01
982C	978.75	979.84	978.68	979	979.84	981.2	979.87	980.33	981.2	979.87	978.68	2.52	979.87
982C	978.77	980.46	978.64	978.97	980.07	979.55	981.62	980.03	980.35	981.62	978.64	2.98	980.01
982C	979.14	980.68	979	979.31	980.35	979.76	981.7	980.2	980.85	981.7	979	2.70	980.27
982C	978.82	980.5	978.61	978.8	980.54	979.37	981.63	980.25	980.7	981.63	978.61	3.02	980.09

PROGRAM SETPOINT	TOP RIGHT BACK	BOTTOM BACK RIGHT	TOP BACK LEFT	FRONT TOP RIGHT	BOTTOM FRONT RIGHT	FRONT TOP LEFT	BOTTOM BACK LEFT	FRONT BOTTOM LEFT	MIDDLE	MAX TEMP	MIN TEMP	DIFFERENCE	AVERAGE
1150C	1147.5	1147.4	1148.2	1147.6	1148	1148.1	1148.6	1147.2	1147.4	1148.6	1147.2	1.40	1147.86
1150C	1145.5	1146	1145.6	1144.5	1145.8	1145	1147.2	1144.9	1145.5	1147.2	1144.5	2.70	1145.72
1150C	1144.7	1145.8	1144.9	1144.8	1145.5	1145.5	1146.7	1144.8	1146.2	1146.7	1144.7	2.00	1145.56
1150C	1146.3	1148.3	1146.3	1145.7	1147.6	1149.5	1146.5	1146.6	1147.9	1149.5	1145.7	3.80	1147.38
1150C	1148.3	1147.9	1148.2	1147.6	1147.6	1147.9	1148.8	1146.9	1148.3	1148.8	1146.9	1.90	1148.03
1150C	1146.4	1147	1146.1	1145.2	1145.2	1145.5	1147.9	1145.8	1146.9	1147.9	1145.2	2.70	1146.53
1150C	1146.8	1147.8	1146.7	1146.6	1147.6	1147.1	1148.6	1146.8	1148.3	1148.6	1146.6	2.00	1147.49
1150C	1145.2	1147.7	1145	1144.5	1147	1144.8	1148.8	1146.1	1147.6	1148.8	1144.5	4.30	1146.55
1150C	1148.5	1147.7	1148	1147.1	1146.9	1147.2	1148.3	1146.2	1148.3	1148.5	1146.2	2.30	1147.67
1150C	1147.3	1148.9	1147	1146.4	1147.3	1146.5	1149.9	1146.3	1148.3	1149.9	1146.3	3.60	1147.78

UNIFORMITY TEST RUN FOR FN333 (Calibration TCs Only)



UNIFORMITY TEST RUN FOR FN333 (All TCs)

